

Networking

Cable Management



Panels

- A **patch panel**, also known as a **patch bay**, is a device that has many ports that go to many different locations in which cables can be connected
 - Makes it easy to organize cables and make transitions when a device moves location



Patch panel with ethernet cables



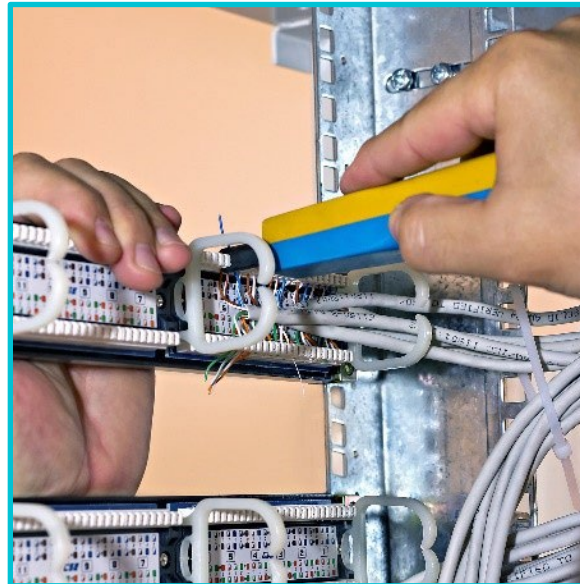
Panels

- Scalability
- Allow network administrators to add new devices without having to run new wires/cables across a building
- Reduce clutter and keep cables organized
- Inexpensive
- A patch panel for fiber optics can also be known as a **fiber distribution panel (FDP)**
 - FDP is specific towards fiber optic ports



Punchdown Blocks

- **Punchdown blocks** create connections by punching/pushing down wires into metal slots that strip the wire and complete a connection
- They are typically pushed down with a punch-down tool
- Efficient
 - Installation does not require the installer to constantly strip wires
 - Punch them down and snip off the excess wiring



Common Punchdown Panels

- **66**
 - Used primarily with telephones lines
 - Contains 50 rows of clips
- **110**
 - Connections for telephone or twisted pair cables
 - Often built into the back of patch panels for the ends of cables
- **Krone**
 - UK alternative to the 110 block
 - Krone is German for Crown
 - Krone blocks punchdowns are at a 45 degree angle
- **Bix**
 - Can have up to 25 twisted pair connections in the block
 - Comes in many different sizes

